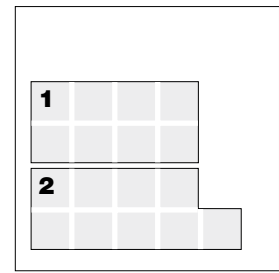




Urban Form Urban Landscape

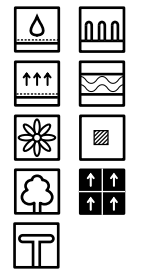
Full tiles shown
For full technical specifications see p233

Module = 457.2 x 457.2 mm
Yarn Weight = 650 g/m²
Pile Height = 3.6 mm
Tuft Density = 96,400 per m²
Total Thickness = 10.2 mm
Total Weight = 4000 g/m²



Colours
1 Urban Form
2 Urban Landscape

Pull out flap from back cover to see explanations of symbols



On request

P .1769-7615	P .1769-7614	P .1769-7616	P .1769-7613	
P .1769-70	P .1769-7477	P .1769-9575	P .1769-9804	
P .1769-7621	P .1769-7617	P .1769-7618	P .1769-7619	
P .1769-7519	P .1769-7657	P .1769-7755	P .1769-9608	P .1769-7620



Riven

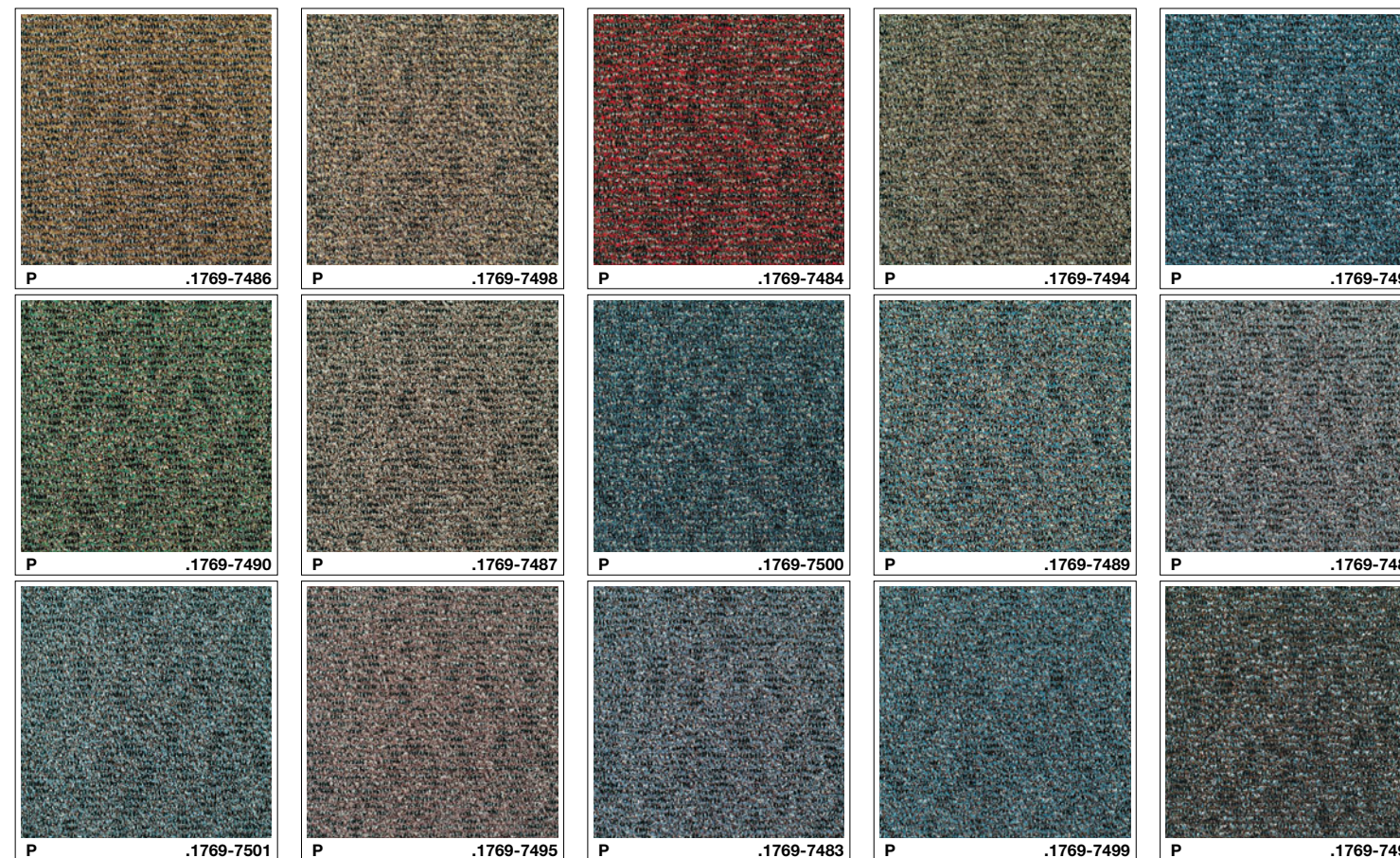
Full tiles shown
For full technical specifications see p233

Module = 457.2 x 457.2 mm
Yarn Weight = 650 g/m²
Pile Height = 3.6 mm
Tuft Density = 96,400 per m²
Total Thickness = 10.2 mm
Total Weight = 4000 g/m²

Pull out flap from back cover to see explanations of symbols



On request





Ratio

Full tiles shown

For full technical specifications see p233

Module = 457.2 x 457.2 mm

Yarn Weight = 650 g/m²

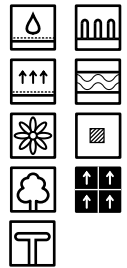
Pile Height = 3.6 mm

Tuft Density = 96,400 per m²

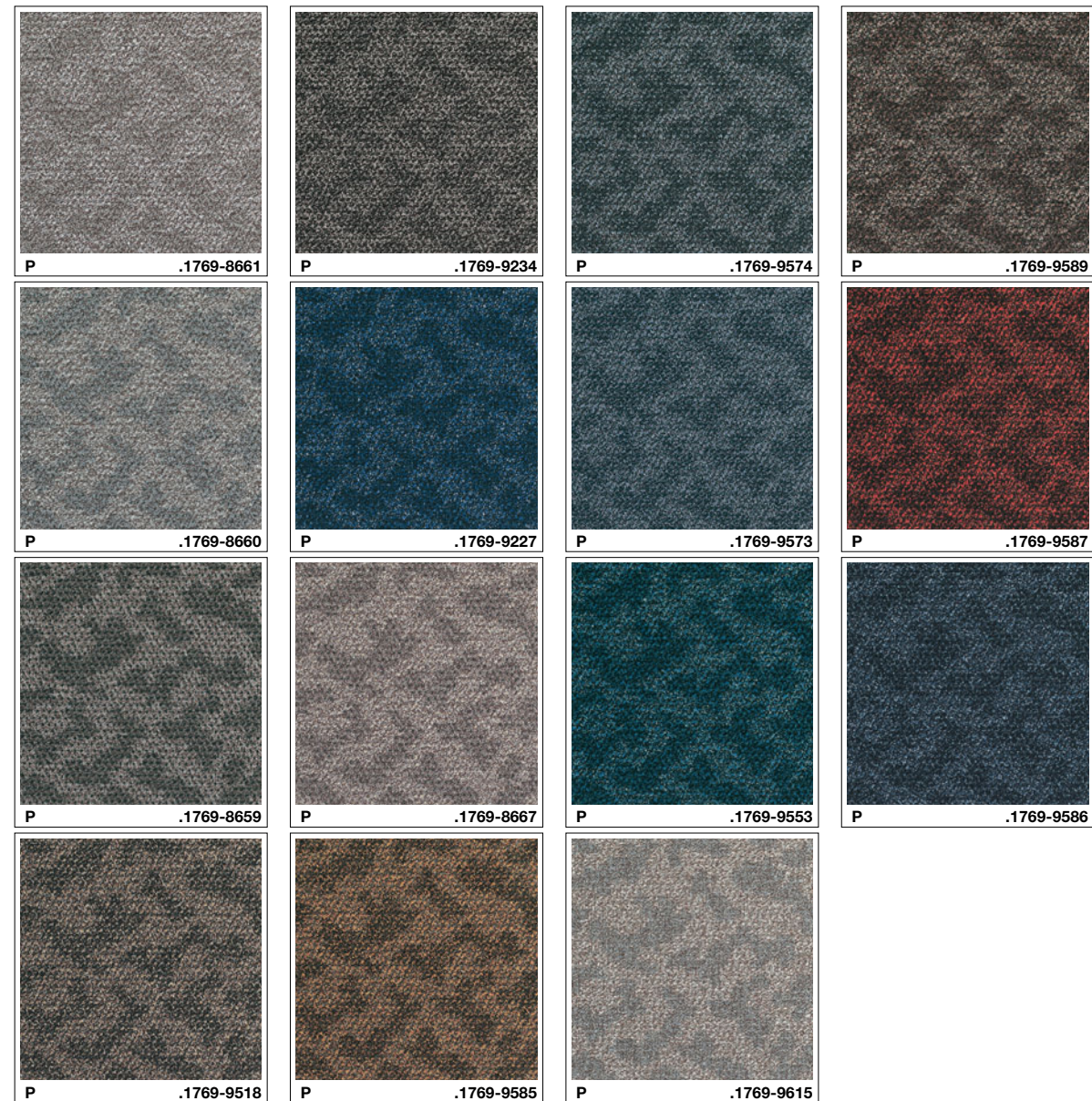
Total Thickness = 10.2 mm

Total Weight = 4000 g/m²

Pull out flap from back cover to see explanations of symbols



On request



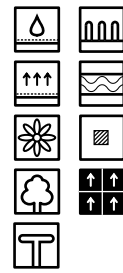


Galaxy

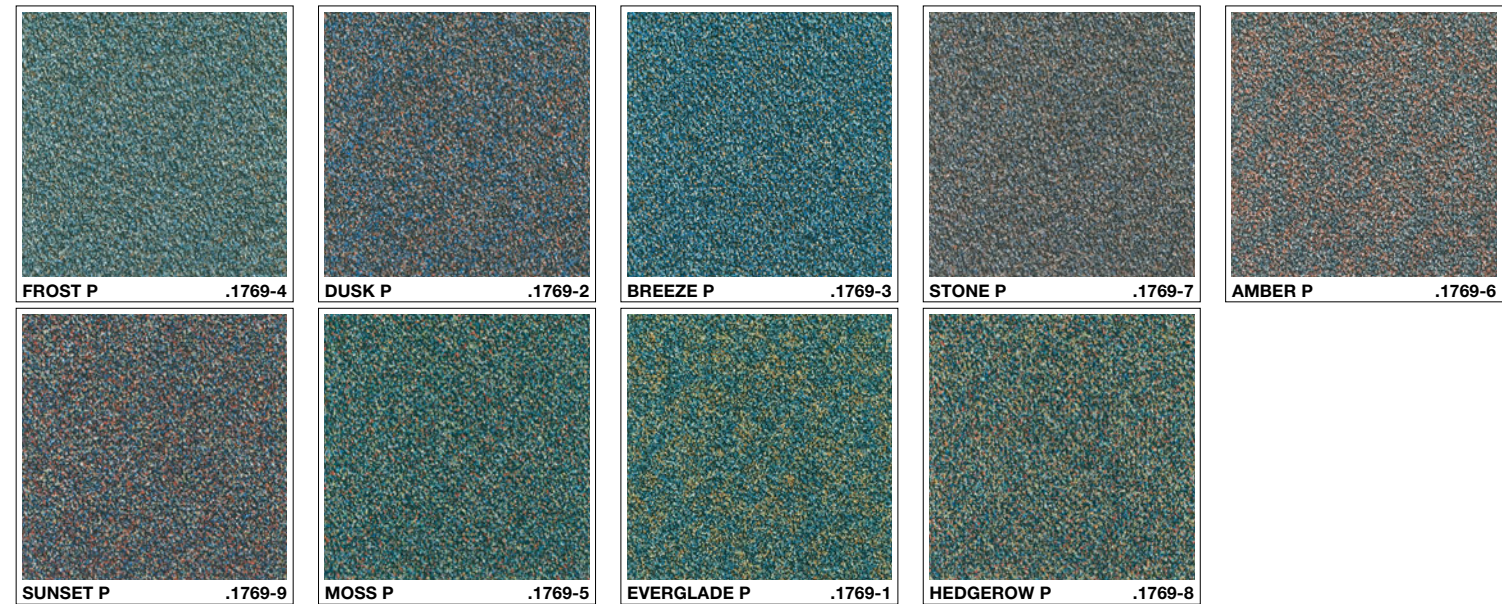
Full tiles shown
For full technical specifications see p233

Module = 457.2 x 457.2 mm
Yarn Weight = 650 g/m²
Pile Height = 3.6 mm
Tuft Density = 96,400 per m²
Total Thickness = 10.2 mm
Total Weight = 4000 g/m²

Pull out flap from back cover to see explanations of symbols



On request





The Omni® modular carpet concept is a sophisticated look which is laid completely randomly on the floor and offers a number of important practical benefits.

Omni® looks great from day one...

Every space designed with Omni® becomes truly unique space. As the product is supplied randomly and then installed randomly, no two Omni® installations will ever look the same.

...Omni® saves installation time

As Omni® is laid completely randomly, there is no need to follow directional arrows when installing the product. This makes installation much quicker and easier.

...i nstallation cost

As there is no requirement for pattern matching with Omni®, wastage during installation is significantly reduced. Off cuts can also be used in perimeter areas, which reduces wastage even further.

... and the environment

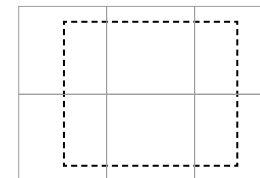
The reduction in wastage that Omni® provides makes important reductions on the installation's environmental impact.

Pull out flap from back cover to see explanations of symbols

Omni® Integrate

Approximately 6 tiles shown
For full technical specifications see p234

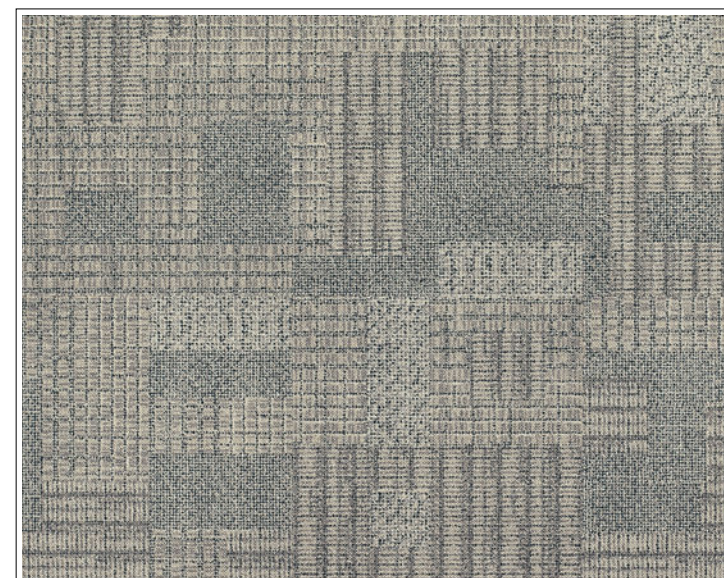
Module = 457.2 x 457.2 mm
Yarn Weight = 560 g/m²
Pile Height = 3.3 mm
Tuft Density = 155,000 per m²
Total Thickness = 10.2 mm
Total Weight = 4000 g/m²



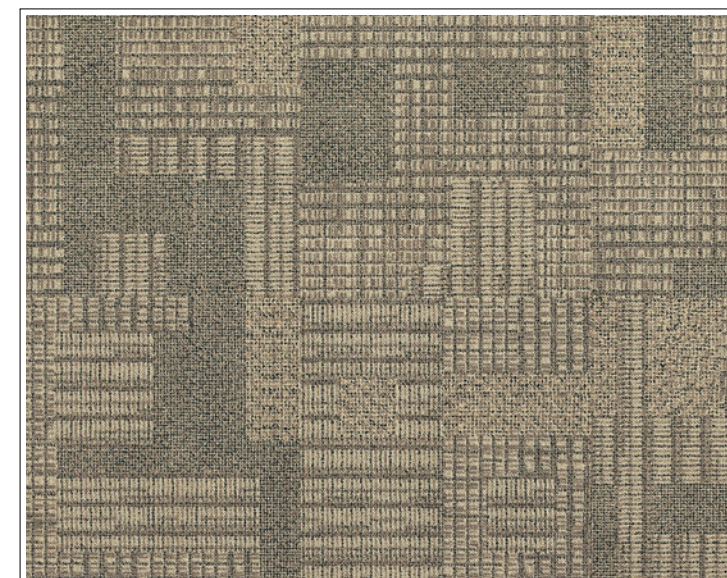
Each image shows 6 tiles with the visible area shown by the dotted line.



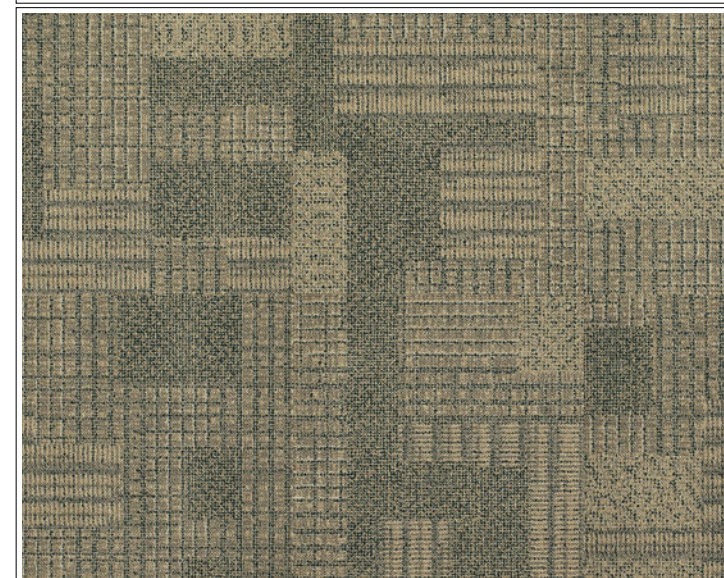
On request



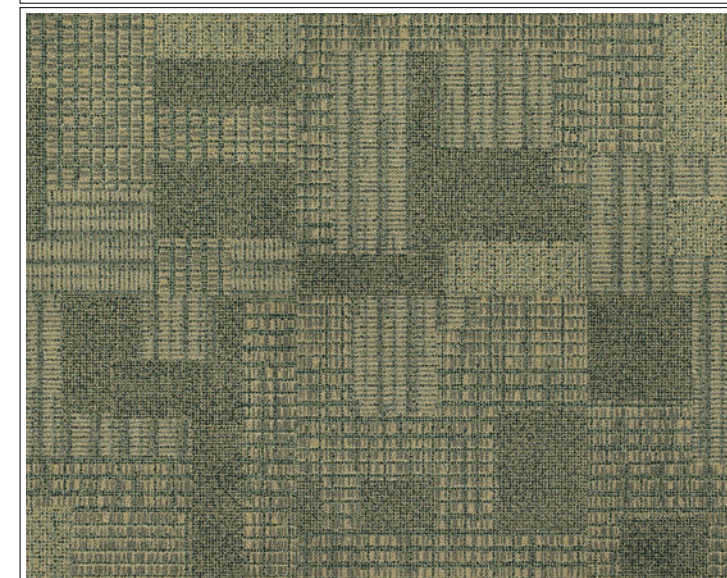
LATTICE P .1001-102



SPAN P.1001-101



TRAVERSE P .1001-113

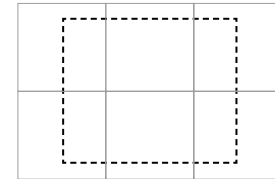


PANEL P.1001-114

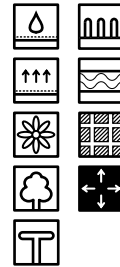
Omni® Integrate

Approximately 6 tiles shown
For full technical specifications see p234

Module = 457.2 x 457.2 mm
Yarn Weight = 560 g/m²
Pile Height = 3.3 mm
Tuft Density = 155,000 per m²
Total Thickness = 10.2 mm
Total Weight = 4000 g/m²

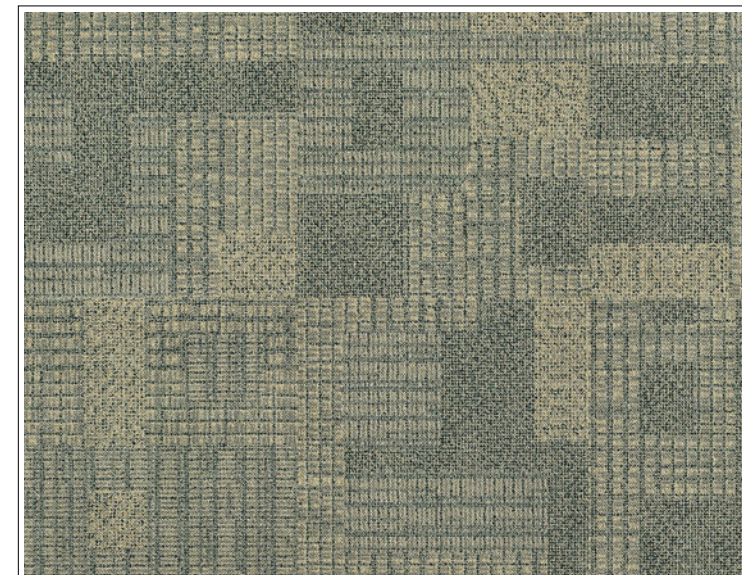


Each image shows 6 tiles with the visible area shown by the dotted line.

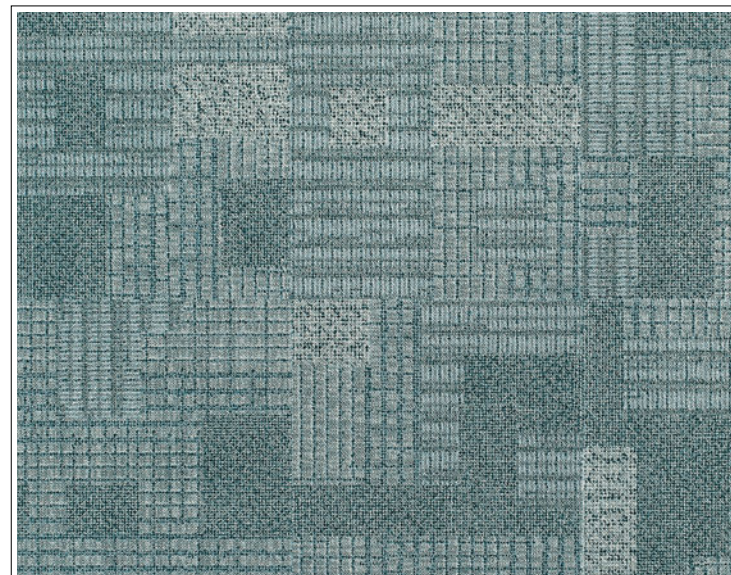


On request

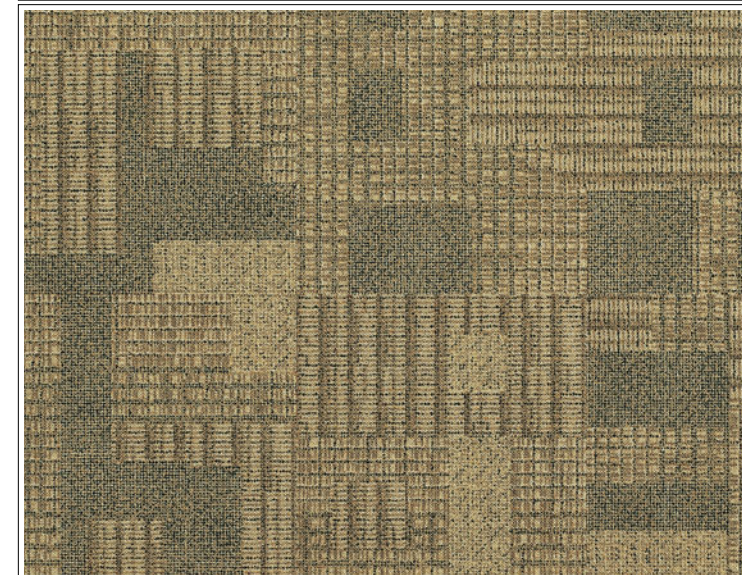
Pull out flap from back cover to see explanations of symbols



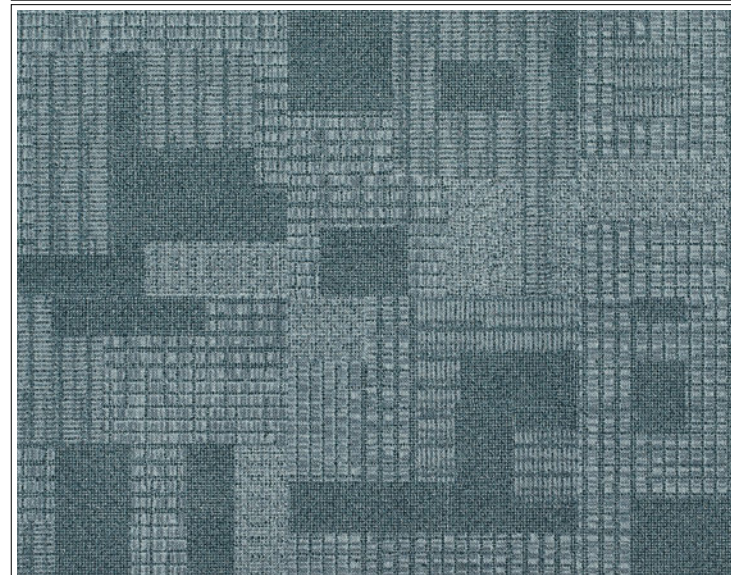
MANTLE P .1001-106



CONSTRUCT P .1001-103



PLEXUS P .1001-107

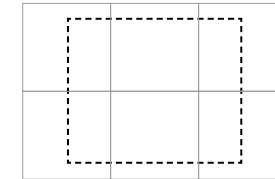


GRID P.1001-105

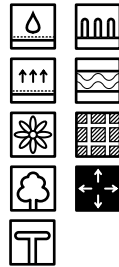
Omni® Integrate

Approximately 6 tiles shown
For full technical specifications see p234

Module = 457.2 x 457.2 mm
Yarn Weight = 560 g/m²
Pile Height = 3.3 mm
Tuft Density = 155,000 per m²
Total Thickness = 10.2 mm
Total Weight = 4000 g/m²

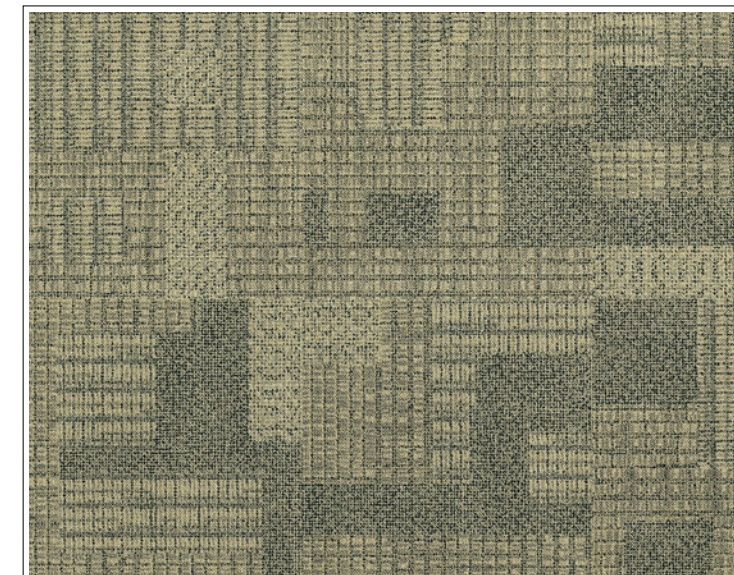


Each image shows 6 tiles with the visible area shown by the dotted line.

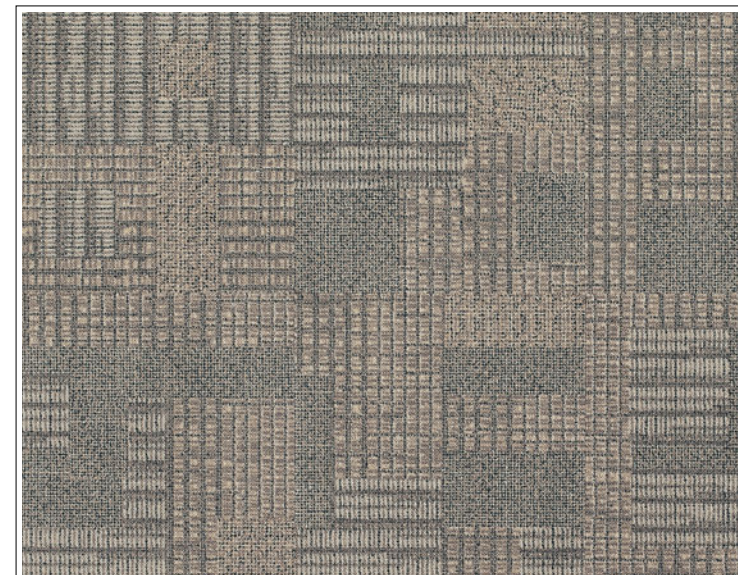


On request

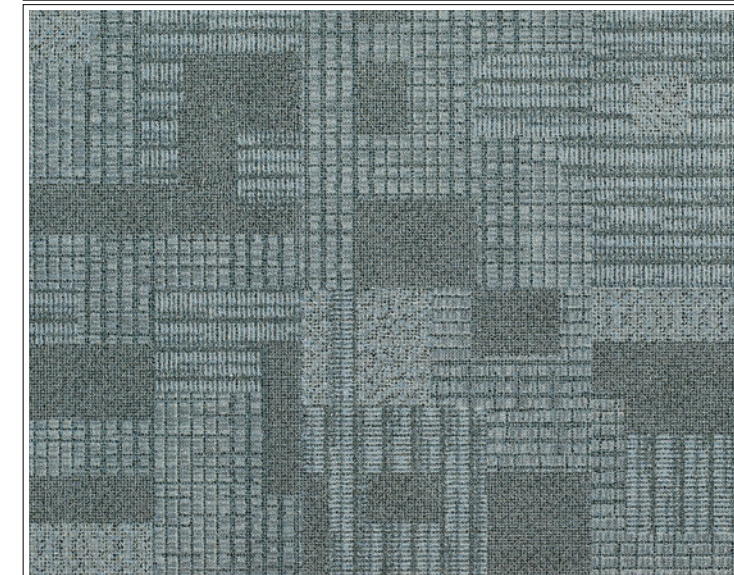
Pull out flap from back cover to see explanations of symbols



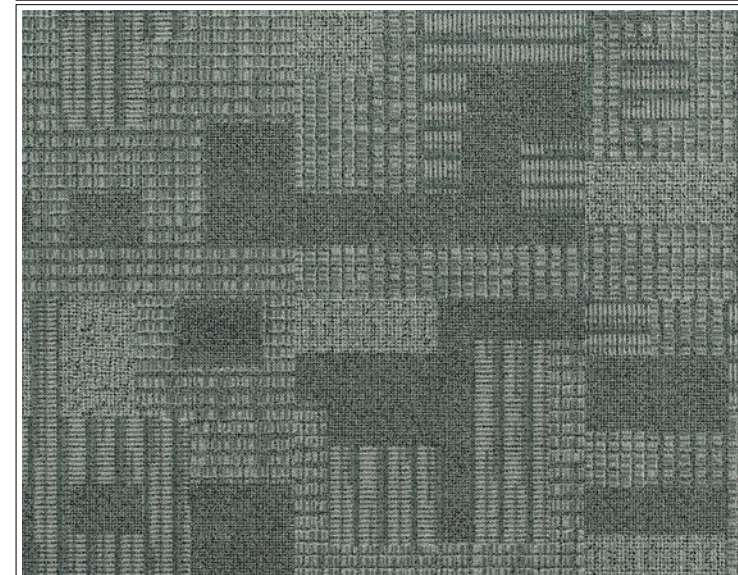
ANNEX P.1001-115



SCREEN P .1001-108



JUNCTION P .1001-111

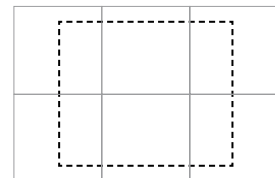


RIVET P.1001-112

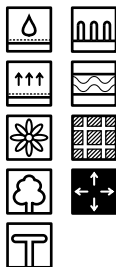
Omni® Integrate

Approximately 6 tiles shown
For full technical specifications see p234

Module = 457.2 x 457.2 mm
Yarn Weight = 560 g/m²
Pile Height = 3.3 mm
Tuft Density = 155,000 per m²
Total Thickness = 10.2 mm
Total Weight = 4000 g/m²

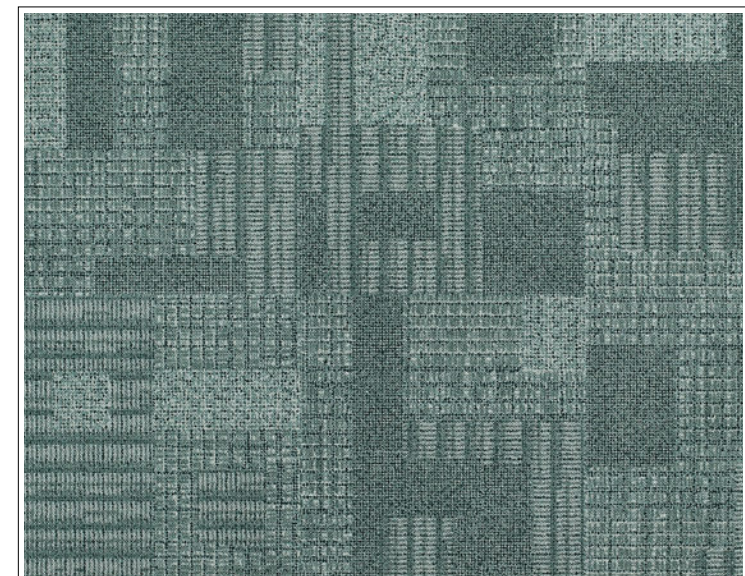


Each image shows 6 tiles with the visible area shown by the dotted line.

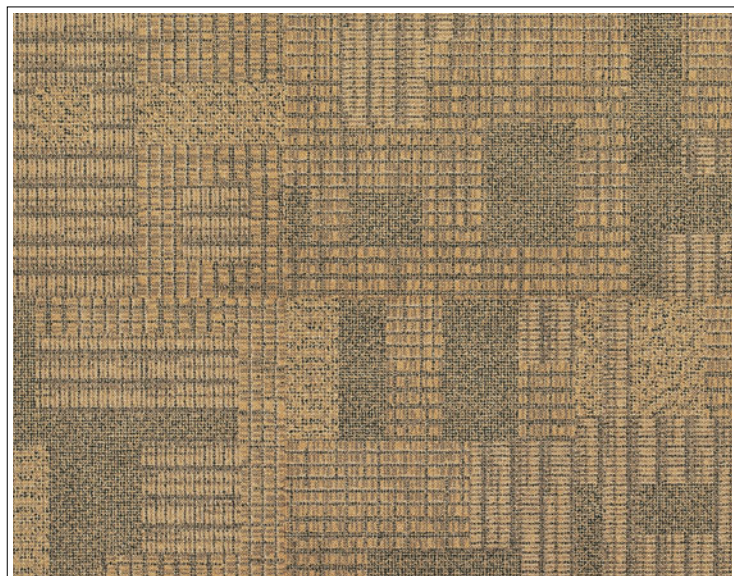


On request

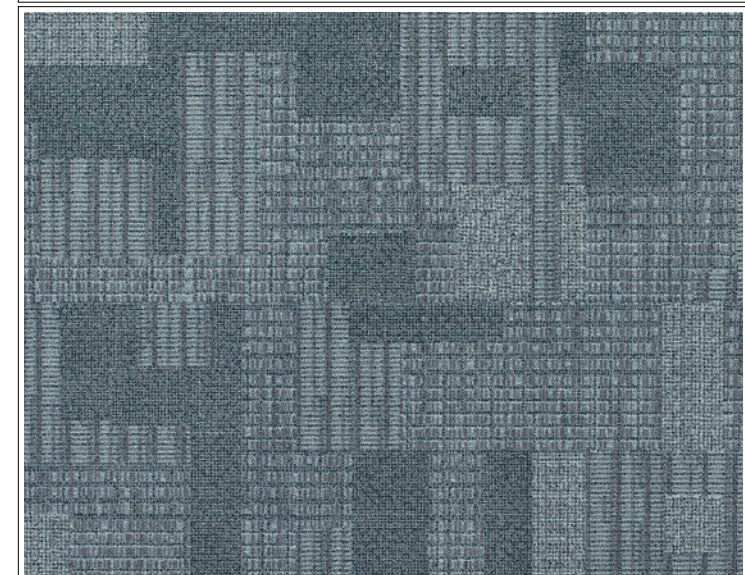
Pull out flap from back cover to see explanations of symbols



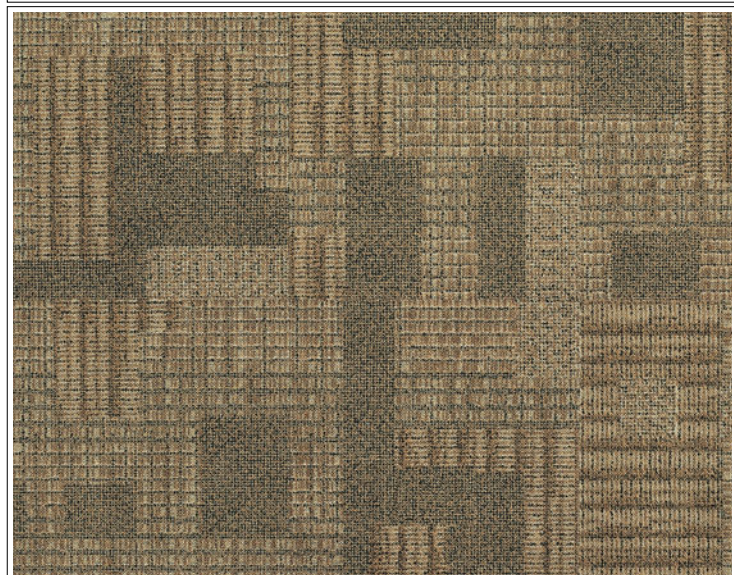
CONNECT P .1001-110



MISHMESH P .1001-117



LABYRINTH P .1001-118

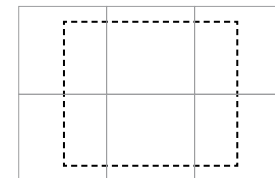


RAFT P.1001-109

Omni® Integrate

Approximately 6 tiles shown
For full technical specifications see p234

Module = 457.2 x 457.2 mm
Yarn Weight = 560 g/m²
Pile Height = 3.3 mm
Tuft Density = 155,000 per m²
Total Thickness = 10.2 mm
Total Weight = 4000 g/m²

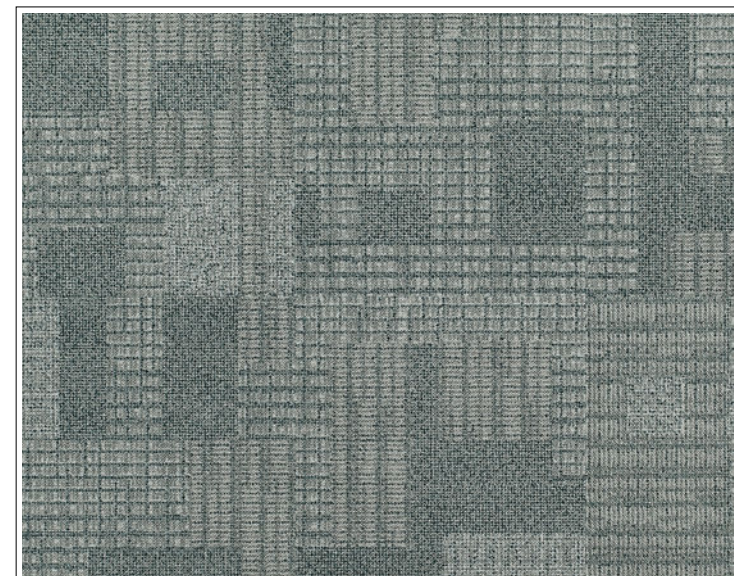


Each image shows 6 tiles with the visible area shown by the dotted line.

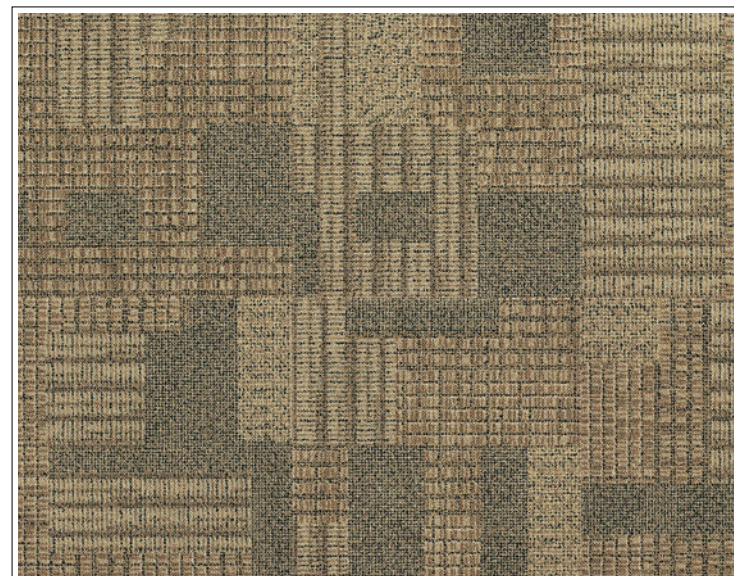


On request

Pull out flap from back cover to see explanations of symbols



SCAFFOLD P .1001-104

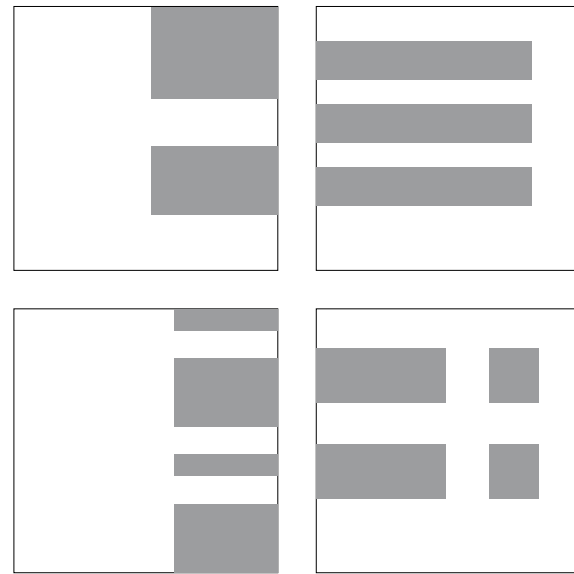


FENDER P .1001-116

Omni® Integrate Detail

For full technical specifications see p234

Module = 457.2 x 457.2 mm
 Yarn Weight = 560 g/m²
 Pile Height = 3.3 mm
 Tuft Density = 155,000 per m²
 Total Thickness = 10.2 mm
 Total Weight = 4000 g/m²



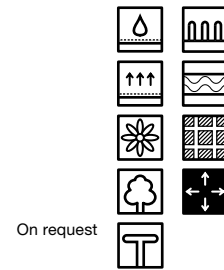
Milliken's unique Millitron® digital colour placement gives you the flexibility to customise your Omni® Integrate design with accents of colour. This gives you the opportunity to enhance your space by customising the floor to tie in with a specific design scheme or corporate identity in a subtle yet flexible way. Omni® Detail can also be used to demarcate areas, colour code different floors within a building or, in line with DDA regulations, the concept can be used to highlight exits or access points with bright colours.

Over time, as you change the layout of your space, the random nature of the design means that you can take out and drop in the Detail tiles as and when required to meet your changing needs.

Because the Details are created during the manufacturing process, there is no need to order separate product or deal with the complication and waste involved with traditional "cut-ins" during installation.

When ordering Integrate Details, you will receive a random assortment of tiles with your chosen colour details placed in the areas indicated on the left.

Pull out flap from back cover to see explanations of symbols



Omni® Integrate Detail

For full technical specifications see p234

Module = 457.2 x 457.2 mm
 Yarn Weight = 560 g/m²
 Pile Height = 3.3 mm
 Tuft Density = 155,000 per m²
 Total Thickness = 10.2 mm
 Total Weight = 4000 g/m²

Pull out flap from back cover to see explanations of symbols

